



made in Italy

SINLAS 50

Sinergo industrial “laser diode” source

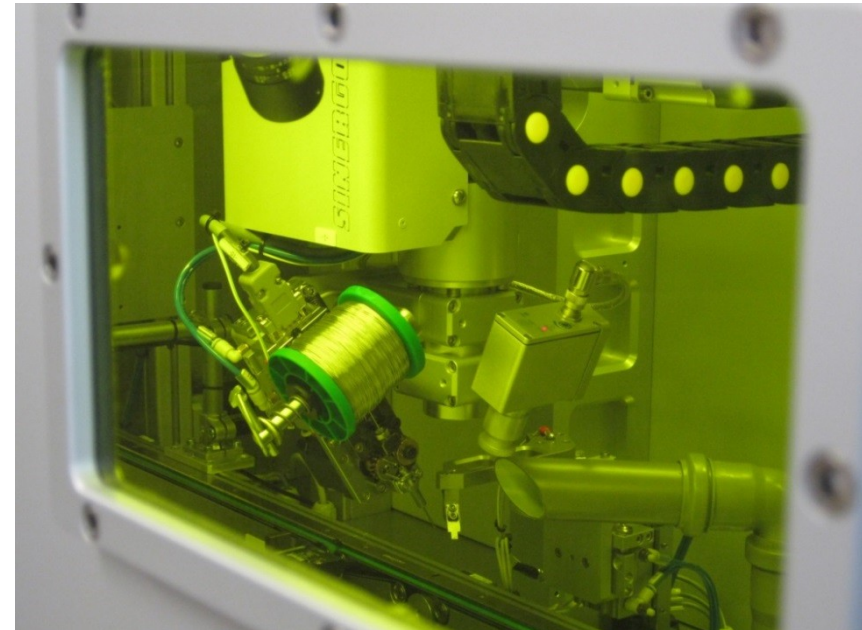
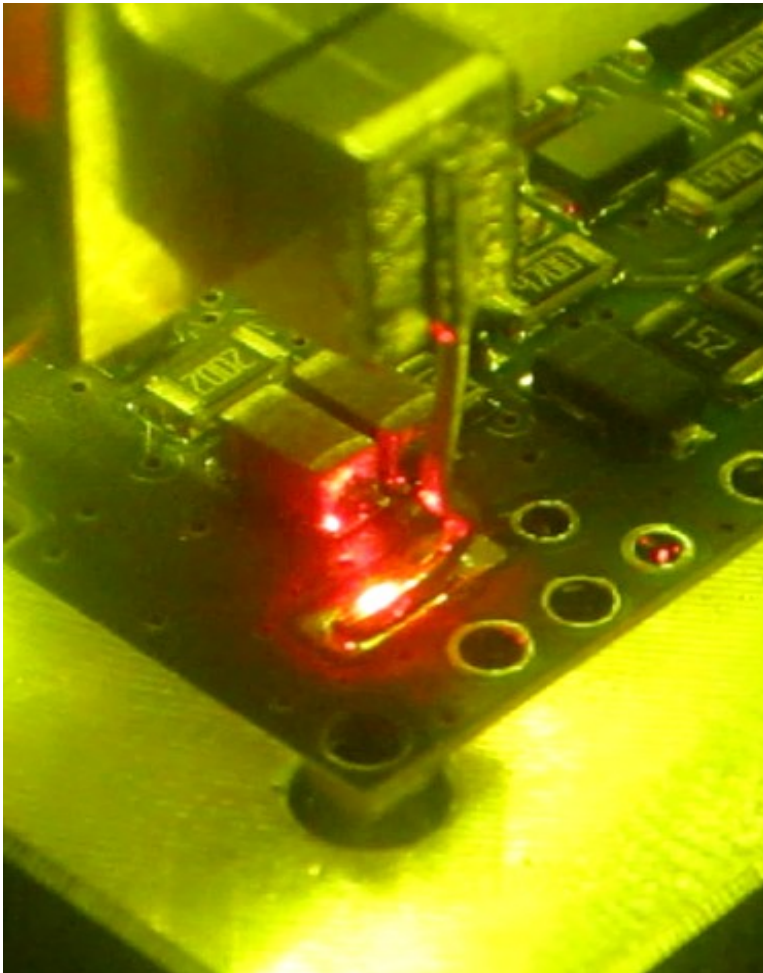
- top class design & construction
- high performance
- water cooled unit
- high performance controller
- fast response
- suitable to be integrated into production lines and robotic cells
- soldering process controlled by fast IR pyrometer and precise advanced programmable algorithm.
- custom versions available
- CE compliant



SINLAS 50 industrial “laser diode” source

laser source:

- 50 W peak output power
- 35 W max output power continuous wave
- 980 nm wavelength
- 808 – 1064 nm wavelengths available
- 635 nm red laser integrated aiming light

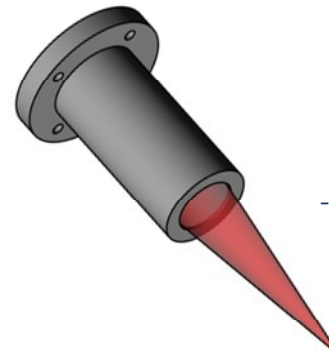


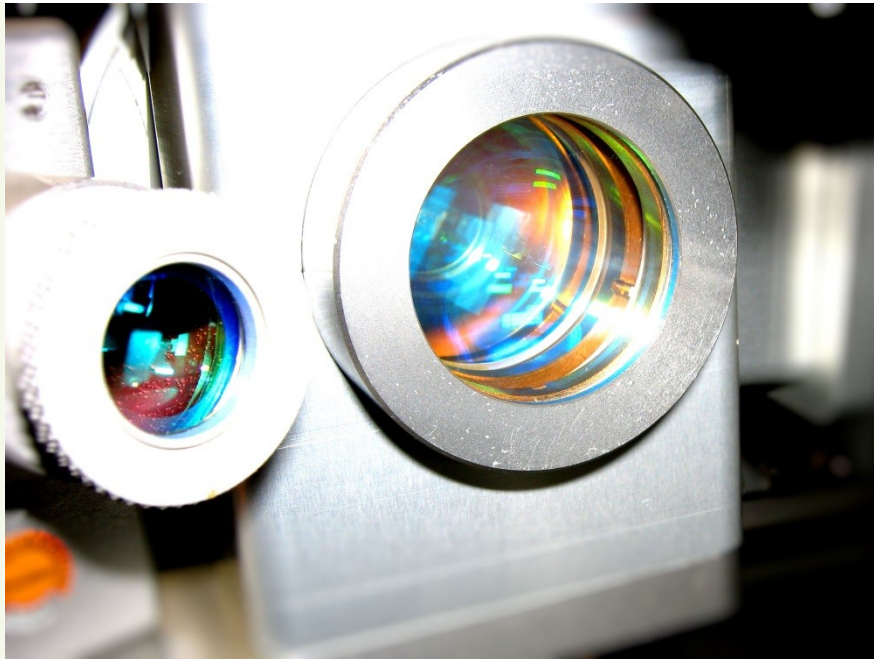
fiber coupling:

- 3 mt. length.
- 200 μm core size. NA 0,22.
- SMA905 terminated.

refocusing unit:

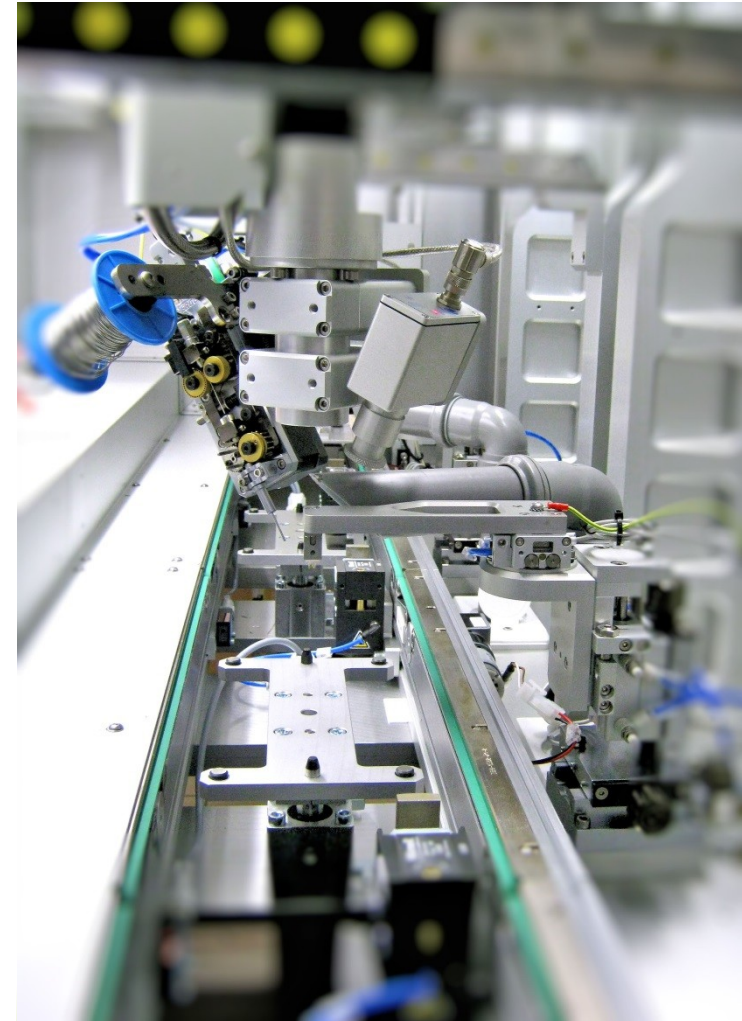
- focal length 120 mm.
- 400nm minimum spot size.
- at 100 mm. working distance.
- coated protective lens.
- more models available.





MENU – PROCESS settings

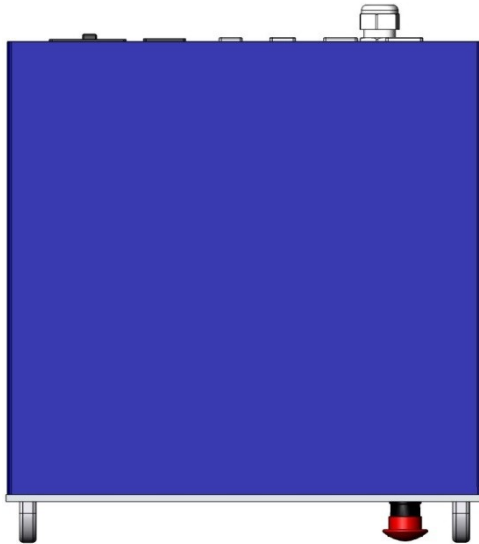
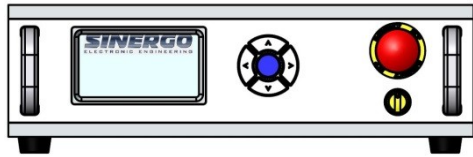
- Power set 0-100% over three phases
- Time set 0- 99 seconds over five phases
- Temperature set over three phases
- Temperature regulation modes:
threshold, average, on-off modulation, fuzzy,
adjustable coefficient advanced PID.
- Working modes: single shot, single cycle, auto.
- Local control, remote control mode (PLC/PC).
- Machine status monitoring and auto protection.
- “Single shot” process data recording 1024 points
- RS232 communication parameters setup



SINLAS 50 industrial “laser diode” source



since 1991



main supply voltage: 230 Vac 50-60Hz
electric power consumption: max. 2 Amp.
Water cooling circuit inlet: 20°C 5 lt./min. 3Kg/cm²

main electric wiring and connectors:

- safety chain circuits
- interface to PLC.
- RS232 (485) serial interface.
- IR pyrometer.
- inert gas valve.

Dimension: 350 x 350 x 135 mm.
Weight: ~ 12Kg

HMI interface:

- graphic VFD display
- easy navigation menu keyboard

